



FDP + POSITIVE DISPLACEMENT PUMPS



YOUR SOLUTION PARTNER



FDP + POSITIVE DISPLACEMENT PUMPS

APPLICATION

The FDP pump is a lobe rotor positive displacement pump of a sanitary design suitable for use in the dairies, food processing, beverage, pharmaceutical and chemicals industries.

This pump is perfect for managing all kinds of fluid, of either low or high viscosity, in the food-processing, dairies, and cosmetics industries, as well as for filtering and bottling applications.

WORKING PRINCIPLE

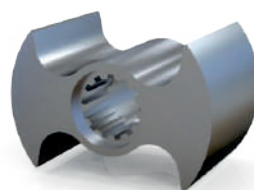
The FDP rotary lobe pumps basically consist of two lobe rotors which rotate simultaneously inside a casing without touching each other. As the rotors rotate, the spaces between the lobes and the casing are successively filled with the product, which is transported to the discharge nozzle with a fixed amount of displacement. The pumped fluid forms a continuous stream thanks to the tolerances between the lobes and the pump casing, thus ensuring an efficient pumping.

OPTIONS

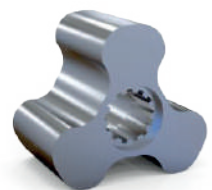
- Vertical support.
- Rectangular nozzle.
- Gaskets: FPM
- Relief valve on the front cover or external by-pass.
- Bi-wing lobes.
- Heating chamber.
- Trolley and/or control panel.
- Connections: Clamp, SMS, etc.
- Mechanical seals: SiC/SiC or TuC/SiC.
- Flushed mechanical seal (quench), double mechanical seal, lip seal (FPM or PTFE), gland packing, O-ring

MATERIALS

- Parts in contact with the product : AISI 316L
- Bearing support : GG 25
- Mechanical seal Gaskets : SiC/C/EPDM

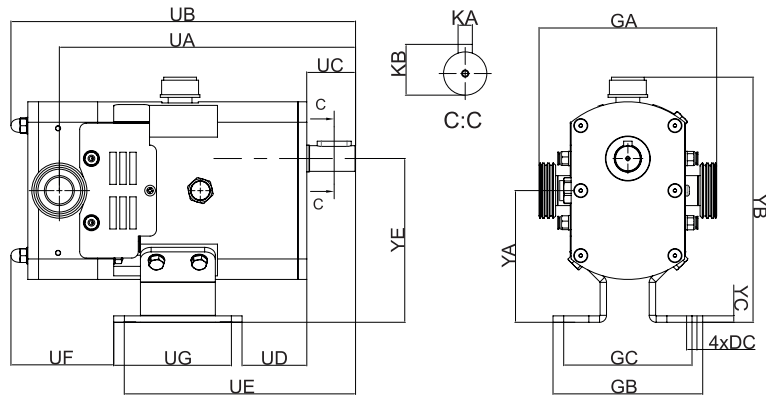


Winglobe



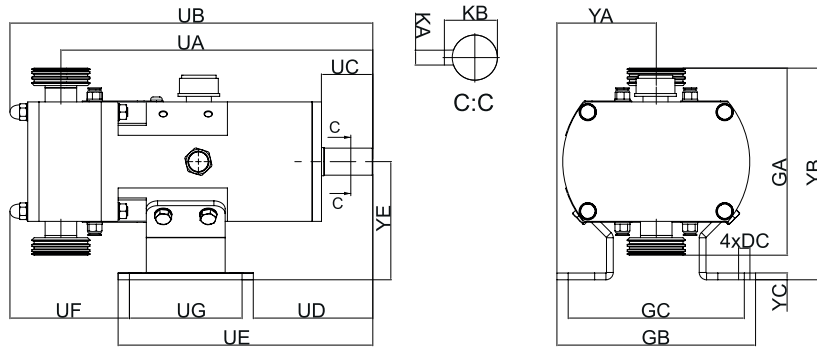
Trilobe

HORIZONTAL DIMENSIONS



TYPE	UA	UB	UC	UD	UE	UF	UG	GA	GB	GC	YA	YB	YC	YE	KA	KB	DC
FDP+A 25	277	322	45	60	212	96	90	166	140	100	123	229	6	150	8	28,3	12
FDP+A 40	277	326				100		174									
FDP+A 50	283	338				112		175									
FDP+B 40	327	385	55	72	268	98	120	195	163	133	138	262	6	175	8	31	14
FDP+B 50	333	395				108		198									
FDP+B 65	341	412				124		209									
FDP+C 65	424	504	79	90	343	136	150	244	194	154	176	327	8	224	10	42	16
FDP+C 80	432	517				149		254									
FDP+C 100	442	536				168		272									
FDP+D 100	525	627	103	120	417	184	170	313	213	173	220	405	12	280	14	48,5	16
FDP+D 125	539	653				211		323									
FDP+D 150	552	687				235		343									

VERTICAL DIMENSIONS



TYPE	UA	UB	UC	UD	UE	UF	UG	GA	GB	GC	YA	YB	YC	YE	KA	KB	DC
FDP+A 25	277	322	45	60	212	96	90	166	176	146	88	187	6	105	8	28,3	12
FDP+A 40	277	326				100		174									
FDP+A 50	283	338				112		175									
FDP+B 40	327	385	55	72	268	98	120	195	196	166	98	219	6	121	8	31	14
FDP+B 50	333	395				108		198									
FDP+B 65	341	412				124		209									
FDP+C 65	424	504	79	90	343	136	150	244	236	196	118	275	8	154	10	42	16
FDP+C 80	432	517				149		254									
FDP+C 100	442	536				168		272									
FDP+D 100	525	627	103	120	417	184	170	313	254	214	127	357	12	200	14	48,5	16
FDP+D 125	539	653				211		323									
FDP+D 150	552	687				235		343									

CAPACITY/ PRESSURE

TYPE	Max. m3/h	Max. bar	lt/100 rev (Tri-Lobe)	lt/100 rev (Bi-Wing)	Max. rpm
FDP+A 25	9,12	10 bar	14	16	900
FDP+A 40	9,69	10 bar	15	17	900
FDP+A 50	12,54	10 bar	19	22	900
FDP+B 40	18,81	10 bar	28	33	900
FDP+B 50	23,37	10 bar	34	41	900
FDP+B 65	30,21	10 bar	44	53	900
FDP+C 65	36,72	10 bar	70	85	700
FDP+C 80	43,2	10 bar	83	100	700
FDP+C 100	53,13	10 bar	101	123	700
FDP+D 100	79,2	10 bar	201	220	700
FDP+D 125	98,64	10 bar	520	274	700
FDP+D 150	117,72	10 bar	298	327	700

LOBE DIMENSIONS

TYPE	Distance Between Axes (mm)	Lobe External Diameter (mm)	Thread Minor Diameter (mm)	Seal Internal Diameter (mm)	Distance Between Lobes (mm)	Lobe Height (mm)
FDP+A 25	60	77,6	36	30	0,2	38
FDP+A 40						42
FDP+A 50						54
FDP+B 40	75	101	45	35	0,25	44
FDP+B 50						54
FDP+B 65						70
FDP+C 65	96	127,1	57,6	40	0,35	72
FDP+C 80						85
FDP+C 100						104
FDP+D 100	120	167,1	72	53	0,45	104
FDP+D 125						130
FDP+D 150						155



PT BUMI TEKNIK PUSAKA ABADI

Perum Citra Raya, Jalan Ecopolis Boulevard Utama

Ruko The Boulevard Blok P01 No. 159R, Tangerang, Banten – 15710

Phone : +62 21 5966 3552 ; Mobile : +62 812 2888 2368 ; Whatsapp : +62 878 5758 2038

Email : pt.btpa@gmail.com ; btpa.jkt@gmail.com ; marketing@btpabadi.com

Website : www.btpabadi.com



www.flussmann.com