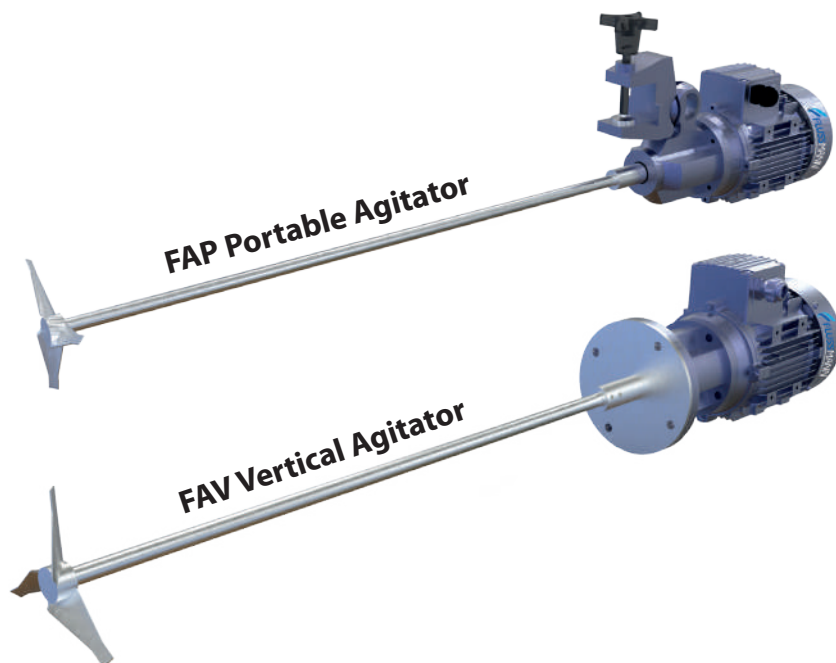




FAV / FAP VERTICAL & PORTABLE AGITATOR



YOUR SOLUTION PARTNER

FAP PORTABLE AGITATOR

APPLICATION

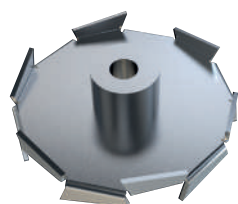
- FAP series agitators are vertical direct motor-driven agitators with clamp.
- High-speed agitation is used in the food processing, cosmetics, pharmaceutical or chemical industries.

WORKING PRINCIPLE

- These agitators are fixed to the wall of the tank by means of a clamp
- Thanks to the joint, they can be inclined to the use position.
- The rotation of the propeller makes the fluid flow to do bottom of the tank and then up to the surface of the fluid along the tank wall opposite to the wall to which the agitator is fitted.
- This effect is promoted if the bottom of the tank is curved.

OPTIONS

- Motor cover
- Atex motor
- Motors: 1000 rpm or 1500 rpm
- Geared motors or variable speed drives
- Saw tooth impeller



Saw Tooth



Line Flux

MATERIALS

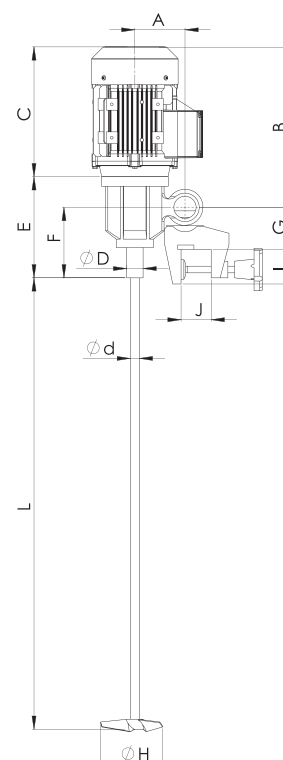
- Parts in contact with the media : AISI 316L
- Retainer : NBR
- Bearing support : Aluminum

DESIGN AND FEATURES

- Agitator with clamp.
- Bearing support.
- IEC B14 MOTORS, 1500 rpm, IP 55, F-class insulation.
- Maximum power 0,75 kW.
- Lineflux propeller

DIMENSIONS									
TYPE		A	B	E	F	Ø d	L max	C max	H
FAP 15-007-130	30	90	290	180	124	16	1250	234	130
FAP 10-005-130	30	90	290	180	124	16	1250	360	130

CAPACITY				
TYPE	Capacity (m3)	Power (kw)	Speed (rpm)	Weight (kg)
FAP 15-007-130	0,8	0,75	1500	16
FAP 10-005-130	0,7	0,55	900	16,5



FAV VERTICAL AGITATOR

APPLICATION

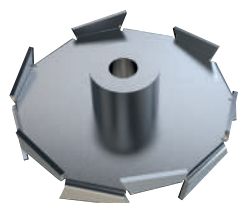
- FAV series agitators presents vertical direct motor-driven agitators.
- High-speed agitation is required in the food processing, cosmetics, pharmaceutical or chemical industries.
- rewuired in the food processing, cosmetics, pharmaceutical or chemical industries.

WORKING PRINCIPLE

- These agitators are normally installed inside the tank either centrally with current deflectors,
- The rotation of the propeller makes the fluid flow to the bottom and then up to the surface of the product along the walls of the tank.
- This effect is promoted if the bottom of the tank is curved.

OPTIONS

- Motor cover
- Atex motor
- Motors: 1000 rpm or 1500 rpm
- Geared motors or variable speed drives
- Saw tooth impeller



Saw Tooth



Line Flux

MATERIALS

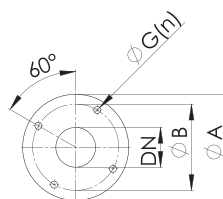
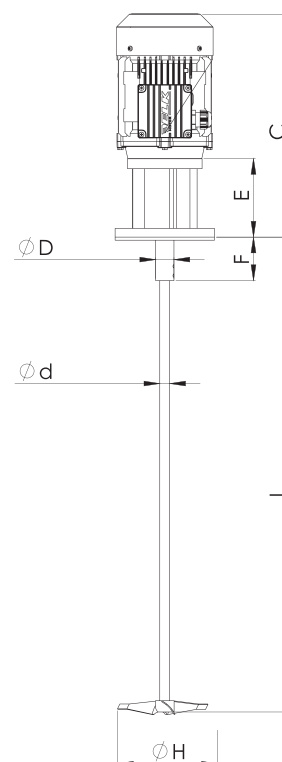
- Parts in contact with the media : AISI 316L
- V-ring and retainer : NBR
- Bearing support : Aluminum

DESIGN AND FEATURES

- Vertical agitator.
- Sealing: V-ring and retainer.
- Bearing support.
- IEC B14 motor, 1500 rpm, IP 55, F-class insulation.
- Max. power 0,75 kW.

DIMENSIONS									
TYPE	Ø DN	Ø A	Ø B	E	Ø G (n)	Ø d	Ø max	C max	H
FAP 15-007-130	30	160	130	130	10-54 (4)	16	1250	360	130
FAP 10-005-130	30	160	130	130	10-54 (4)	16	1250	360	130

CAPACITY				
TYPE	Capacity (m3)	Power (kw)	Speed (rpm)	Weight (kg)
FAP 15-007-130	0,8	0,75	1500	16,5
FAP 10-005-130	0,7	0,55	900	17





 **PT BUMI TEKNIK PUSAKA ABADI**

Perum Citra Raya, Jalan Ecopolis Boulevard Utama

Ruko The Boulevard Blok PO1 No. 159R, Tangerang, Banten – 15710

Phone : +62 21 5966 3552 ; Mobile : +62 812 2888 2368 ; Whatsapp : +62 878 5758 2038

Email : pt.btpa@gmail.com ; btpa.jkt@gmail.com ; marketing@btpabadi.com

Website : www.btpabadi.com